

MONITOR

Early detection
for your
protection!

Your complete monitoring solution

Where data meets safety

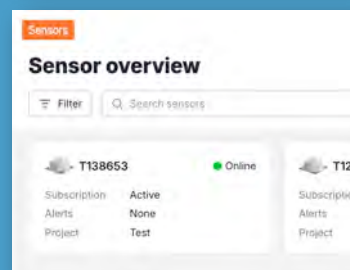
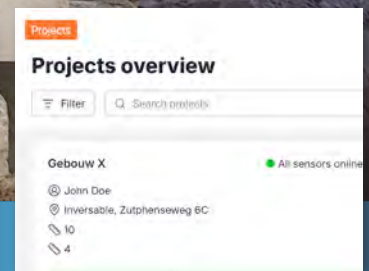
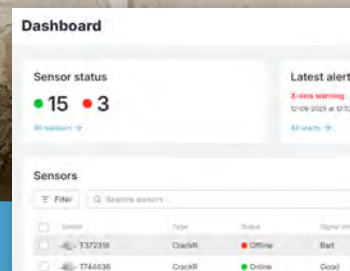
Monitor is the online platform that turns sensor data into insights. With real-time dashboards and instant alerts, you stay ahead of risks and in control of your assets. Anytime, anywhere.

Why Monitor?

- Act early – instant notifications when structures move
- Stay in control – all projects and sensors in one clear dashboard
- Save time – intuitive interface and smart visualization
- Scalable – from one sensor to large projects
- Flexible integration – designed to work with third-party platforms
- Included free with CrackR and TiltR purchase and subscription

Applications

Suitable for a wide range of structural and geotechnical monitoring projects, from buildings and infrastructure to earthworks and water defenses. Combine CrackR and TiltR with Monitor for a complete structural health monitoring solution.



Dashboard & Functionality

MonitoR gives you instant insights

- Dashboard overview – central view of all projects, sensors and alerts
- Sensor management – detailed status, signal strength, logs, graphs & media
- Project management – structure sensors per site, assign users and roles
- Notifications & thresholds – automatic alerts on structural movements
- Logbook & history – full traceability of events and interventions
- Scalable & flexible – expand easily with new sensors and projects

User configuration options

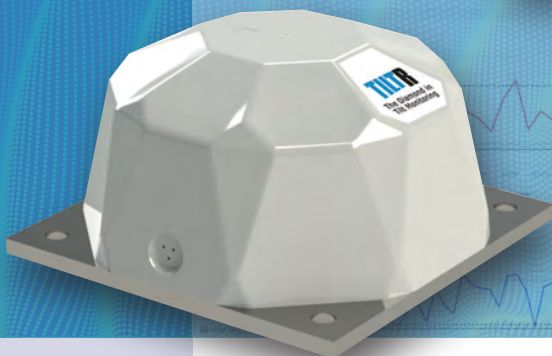
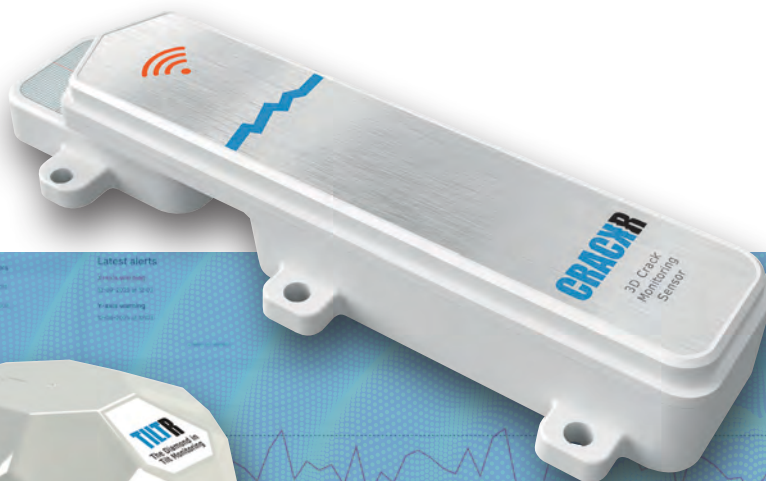
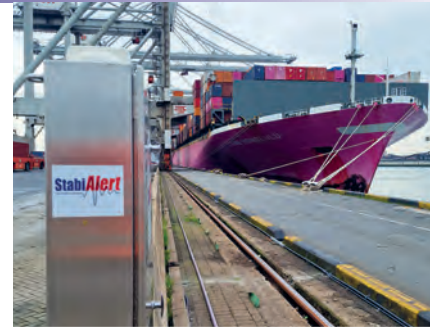
- Creating projects
- Adding sensors to projects
- Adjusting measurement intervals
- Zeroing sensors
- Setting alarms per project or at sensor level
- Defining who receives notifications in case of threshold exceedances

API & Integration

- Secure and scalable API for third-party integration
- On demand data access & upload
- Customizable for diverse monitoring needs
- Cross-platform accessibility

General specifications

- 24/7 online monitoring
- Secure cloud-based architecture
- Adjustable alert thresholds
- Multi-project & multi-user support
- Web-based access (desktop & mobile)



Latest alerts
Alerts warning
Alerts warning
Alerts warning
Alerts warning

Visiting address
Wasaweg 18-1
9723 JD Groningen
the Netherlands

Tel +31(0)50 549 75 15
E-mail info@stabialert.nl

www.stabialert.nl

A solution by
StabiAlert

MONITOR